



# Green Acres Group Prospectus

Green acres  
Aston Lane,  
Aston Flamville,  
Leicestershire,  
LE10 3AA

opening times  
monday – friday 7:30–17:30  
(6pm by arrangement)  
0–4 year olds

Burbage nature nursery  
Aston Lane,  
Aston Flamville,  
Leicestershire,  
LE10 3AA

Pentecostal Church Centre  
Tilton Road,  
Burbage  
Leicestershire  
LE10 2SE

opening times  
monday – Thursday 8:30–16:30  
Term Time only  
2–4 year olds

Telephone 01455 701777

Email – [office@greenacreschildcare.co.uk](mailto:office@greenacreschildcare.co.uk)



## Green Acres Group

Welcome to Green Acres.

Which consists of Green acres, Burbage Nature nursery and Burbage Preschool.

. We believe that the early years are crucial in shaping a child's development. We are committed to providing a safe, stimulating, and nurturing environment where children can learn, grow, and thrive.



## Our Vision:

Nurturing today's children, inspiring tomorrow's leaders.  
Promoting life long happiness and well being.

## Our Mission:

We offer a warm, welcoming, and inclusive environment where every child feels valued and respected.

We deliver a rich and stimulating curriculum that meets each child's individual needs and interests.

We employ passionate, experienced and energetic teachers.

We work in partnership with parents and professionals to ensure each child reaches their full potential.



# CORE VALUES

**S**UPPORTIVE

**H**ONESTY & INTEGRITY

**I**NCLUSIVE

**N**URTURING

**E**MPOWERING

## LET US SHINE



# Our Curriculum:

We have planned and designed our own curriculum based on the early years foundation stage, guided by four key principles and links to our core values:

1. Celebrating each unique child and supporting them to make the best progress.
2. Fostering positive and nurturing relationships.
3. Creating inclusive environments for all children.
4. Sequencing learning to build on children's existing knowledge to give them the very best start to their education.

Our curriculum will provide rich, inspiring learning opportunities across all 7 areas of learning.

Communication & Language: Through storytelling, rhymes, songs and meaningful conversations.

Personal, Social and Emotional Development: Through building confidence, self-esteem and supporting independence and resilience.

Physical Development: Through indoor and outdoor play to build on gross and fine motor skills and help children understand how to keep themselves healthy.

Literacy: Through reading familiar stories, phonics knowledge and opportunities to mark make.

Mathematics: Through counting, number recognition and problem solving.

Understanding the world: By exploring different cultures, people and communities, the natural world through reading non-fiction books and real life experiences.

Expressive Arts & Design: Through art and exploring with a wide range of media and materials, music, acting, storytelling and imaginative play.

This will prepare children for school while encouraging deep engagement and high concentration. Our qualified teachers observe children's learning to foster positive attitudes through effective learning characteristics: playing and exploring, active learning, and creating and thinking critically. We incorporate British Values to teach respect, equality and diversity. We want our children to be inspired to make a difference in this world by being kind and respectful.





## Parent Partnership:

We build strong partnerships with parents who are essential for children's success.

We encourage open communication and regular feedback. We offer:

- Regular parent-teacher meetings
- Online updates on Tapestry and FIDO
- Daily handovers and opportunities to share information
- Parent workshops and events

### Events

Participate in the Burbage carnival since 2014, winners twice, 2nd/3rd place 8 times

Christmas party with 'Real' Father Christmas

Graduation for those going to Primary School (Big School)

## Professional Partnership:

We work closely with professionals like Speech and language, paediatrician and special educational needs advisers. This means we share expertise and children receive the early help they need. This leads to a supportive, holistic learning environment for each child.





# Admissions:

Families interested in our Early years setting are encouraged to book a show around via our website [www.greenacreschildcare.co.uk](http://www.greenacreschildcare.co.uk). This visit provides an opportunity to explore our facilities, meet some of the team and ask any questions.

Upon receipt of the completed registration form, our team will contact you to finalise any necessities and paperwork.

Before your child's start date, we will arrange a settling in session to ensure a smooth transition into our setting.

For any enquiries or further assistance regarding the admissions process, please feel free to contact us through the contact details provided.



# Our Meals

Healthy eating habits are essential for young children's growth and development. We provide nutritious meals and snacks that are carefully planned to meet the dietary needs of under-fives, using fresh ingredients and minimising sugar and processed foods. Our mealtimes are a positive and social experience, where children are encouraged to try new foods, learn about healthy choices, and develop good eating habits that will benefit them for a lifetime.



# Week 1 Summer Menu

## Monday

- A selection of cereals, porridge, toast and fruit
- Tuna pasta Bake (W)(D)(M)
- Make your own tea

## Tuesday

- A selection of cereals, porridge, toast and fruit
- Jacket potato with chilli
- Pittas Hummus and cucumber (W)

## Wednesday

- A selection of cereals, porridge, toast and fruit
- Sweet and Sour chicken with rice
- Selection of sandwiches with carrot sticks (W)(S)

## Thursday

- A selection of cereals, porridge, toast and fruit
- Chicken Fajitas (W)
- Crumpets with cheese and tomatoes (W)(S)(D)

## Friday

- A selection of cereals, porridge, toast and fruit
- Spaghetti and meat balls (W)
- Soup and a roll (W)(S)

## Snacks

- Am snacks  
A selection of Crackers and Savoury snacks with carrot or cucumber sticks / crudites
- PM Snack  
A selection of Fruit

## Time

Breakfast  
7:30-0900

Am Snack  
09:30-11:00

Lunch  
11:45

Pm Snack  
14:00-15:00

Tea  
16:00

## Allergens

W = Wheat  
D = Dairy  
B = Barley

S = Soya  
M = Mustard



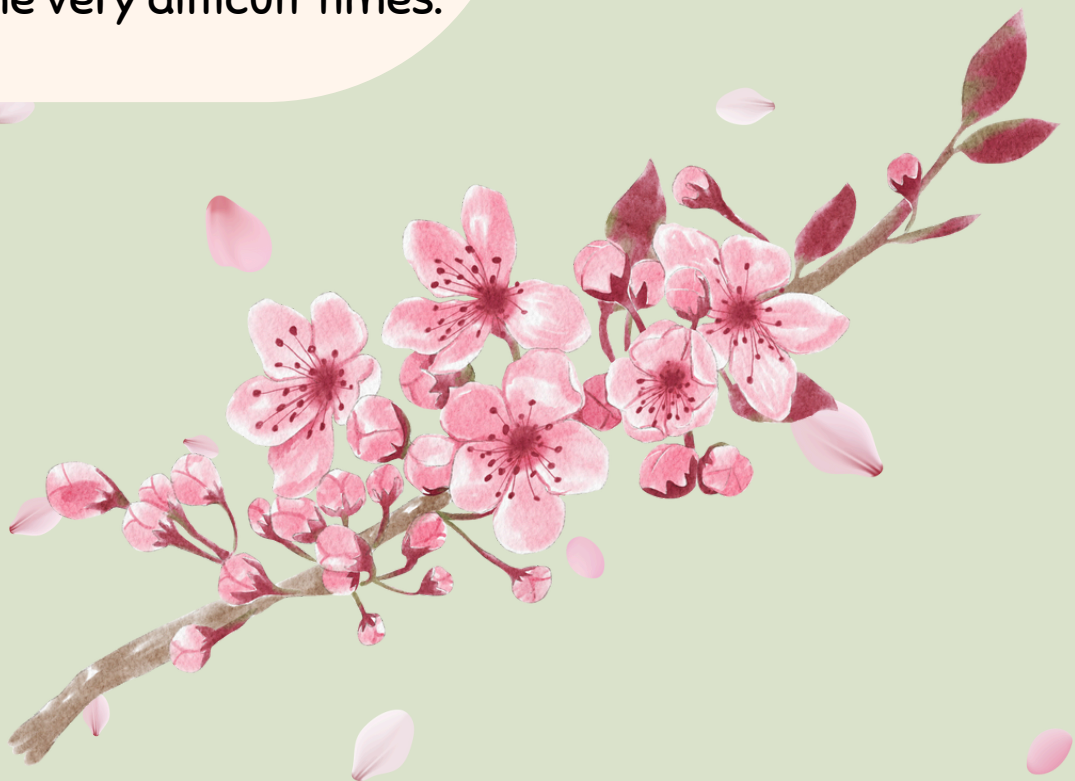


# Testimonials:

"Thank you so much for everything you have done for Amy and putting up with my numerous questions! Amy is now as ready as she can be for big school and we have you to thank for this."

"Big thank you to all of you! We really love your friendly and homely environment, and we are very glad that 'child not to be named' could be a part of your family."

"We would just like to say a big thank you to you all for your support and kindness to Edith. We have appreciated your help and input, contributing to giving her stability and carefree days through some very difficult times."





We look forwards to meeting  
you and your little one soon.

